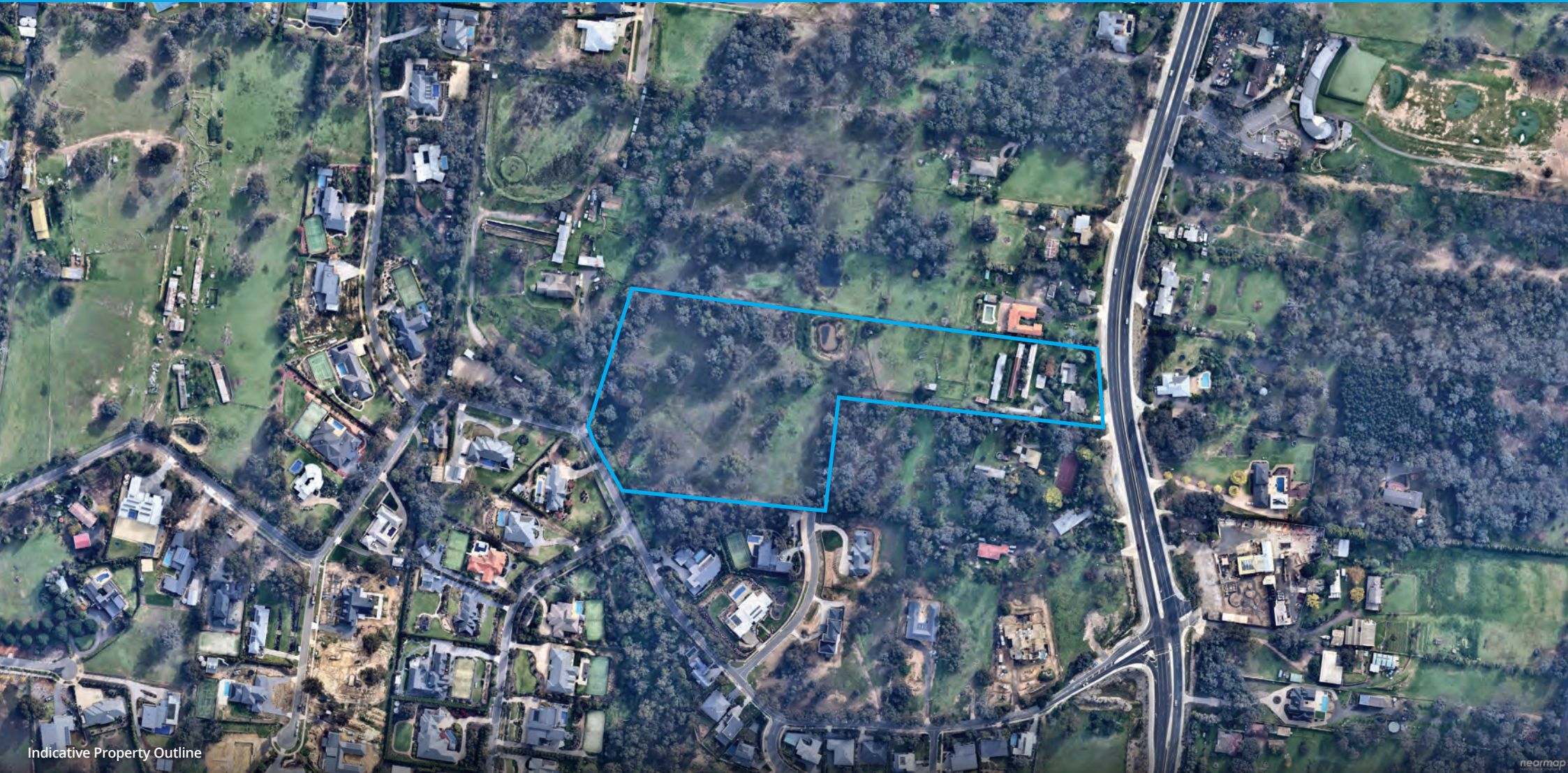


PERMIT APPROVED SUBDIVISION OPPORTUNITY



Indicative Property Outline

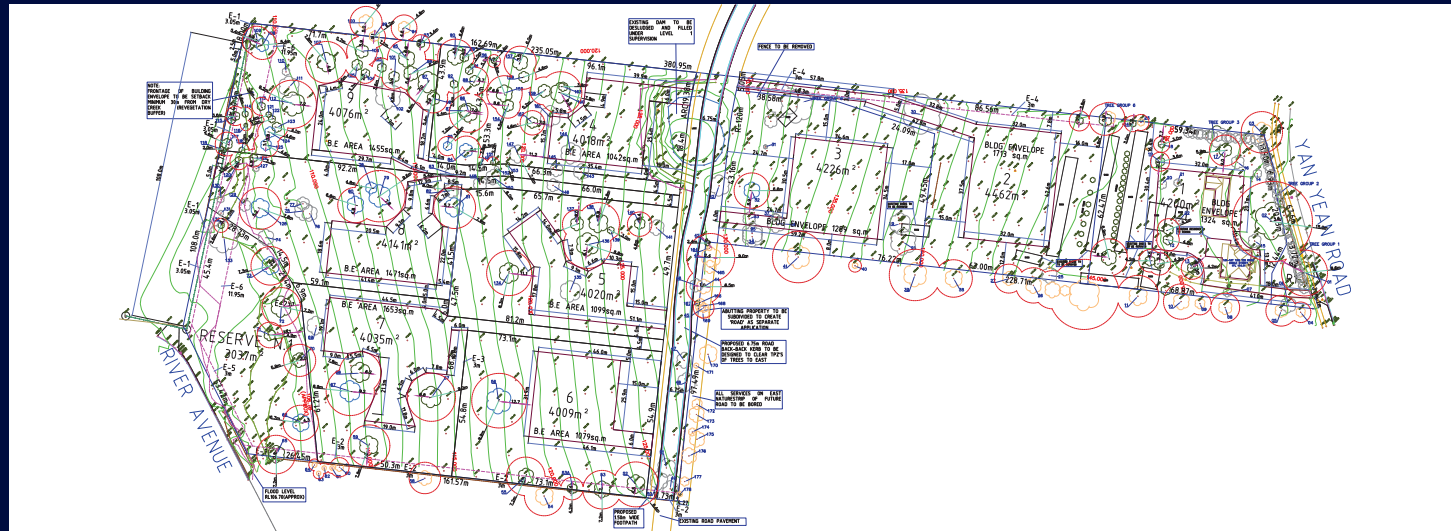
nearmap

191-197 YAN YEAN RD, PLENTY

FOR SALE BY TENDER

CLOSING THURSDAY 3 DECEMBER AT 3:00 PM

- Approved 9 Lot subdivision with lots between 4,009 & 4,462 sqm (approx.)
- Three road frontages – Main access Leafy Drive
- Land Area: 4.23 ha (approx.)
- Attractive outlooks for many completed allotments
- Significant surrounding development with high quality homes
- Zoning: Low Density Residential Zone (LDRZ)
- Existing hobby farm



Grant Sutherland 0418 390 185
GSutherland@sutherlandfarrelly.com.au

Paul Sutherland 0418 360 162
PSutherland@sutherlandfarrelly.com.au



sutherlandfarrelly.com.au
43 Agnes Street, East Melbourne

9650 3531

Particulars herein are for information only and do not constitute any representation by the Vendor or the Agents. All stated dimensions and areas are approximate. Interested parties are requested to take such action as is necessary to satisfy themselves on any pertinent matters.