

GROWTH CORRIDOR DEVELOPMENT SITE



2,063 sqm*

Indicative boundary outline

82 Toomuc Valley Road, Pakenham

RECEIVERS' SALE BY EXPRESSIONS OF INTEREST

CLOSING WEDNESDAY 7 JUNE AT 3:00 PM

- Land Area 2,063 sqm*
- Zoning General Residential 1
- 20.85* metre Frontage to Toomuc Valley Road
- Part improved with extensive car parking
- Suit residential or medical development (STPA)
- Adjoins child care centre

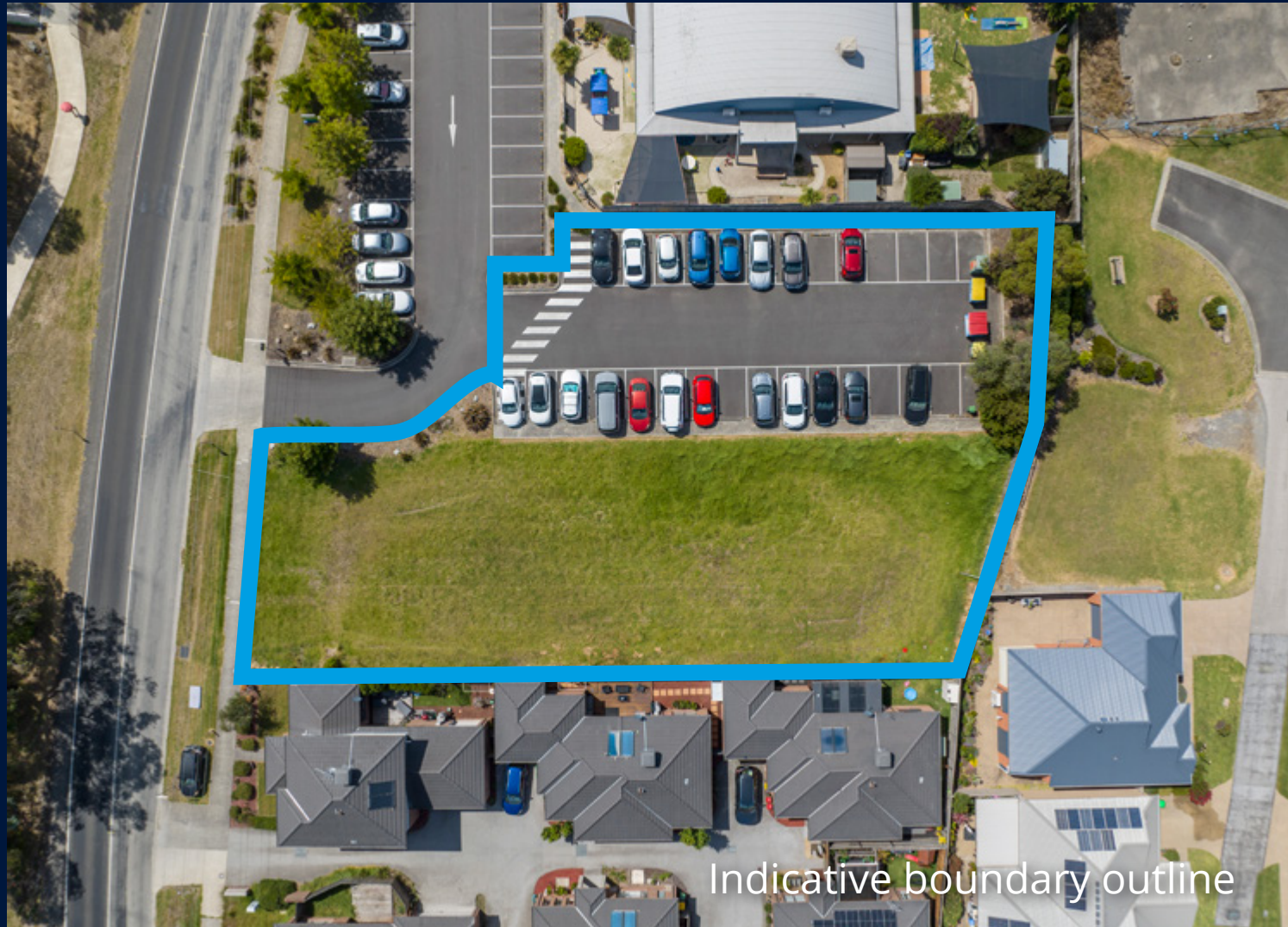
Under instruction from:



*approx.

Grant Sutherland 0418 390 185

Paul Sutherland 0418 360 162



Indicative boundary outline



sutherlandfarrelly.com.au
43 Agnes Street, East Melbourne

Particulars herein are for information only and do not constitute any representation by the Vendor or the Agents. All stated dimensions and areas are approximate. Interested parties are requested to take such action as is necessary to satisfy themselves on any pertinent matters.