

DEVELOPERS / INVESTORS / OCCUPIERS - BUY ONE OR BUY BOTH



5-9 Baillie Street and 6-10 Provost Street, North Melbourne

FOR SALE BY EXPRESSION OF INTEREST

CLOSING THURSDAY 10 AUGUST AT 4:00 PM

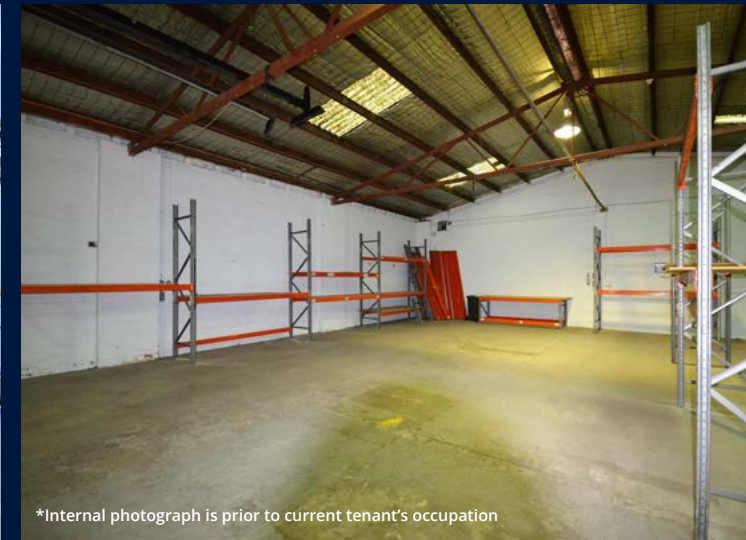
5-9 Baillie Street

- Open Plan Warehouse
- Land / Building Area 297 sqm
- Zoned Mixed Use
- Current Rental \$52,500 pa + GST (as at 1/10/23)



6-10 Provost Street

- Open Plan Warehouse
- Land / Building Area 287 sqm
- Zoned Mixed Use
- Current Rental \$43,709.04 pa + GST (as at 1/10/23)



*Internal photograph is prior to current tenant's occupation

Paul Farrelly 0418 358 998
pfarrelly@sutherlandfarrelly.com.au



sutherlandfarrelly.com.au
43 Agnes Street, East Melbourne

Particulars herein are for information only and do not constitute any representation by the Vendor or the Agents. All stated dimensions and areas are approximate. Interested parties are requested to take such action as is necessary to satisfy themselves on any pertinent matters.